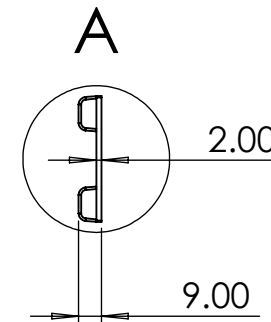
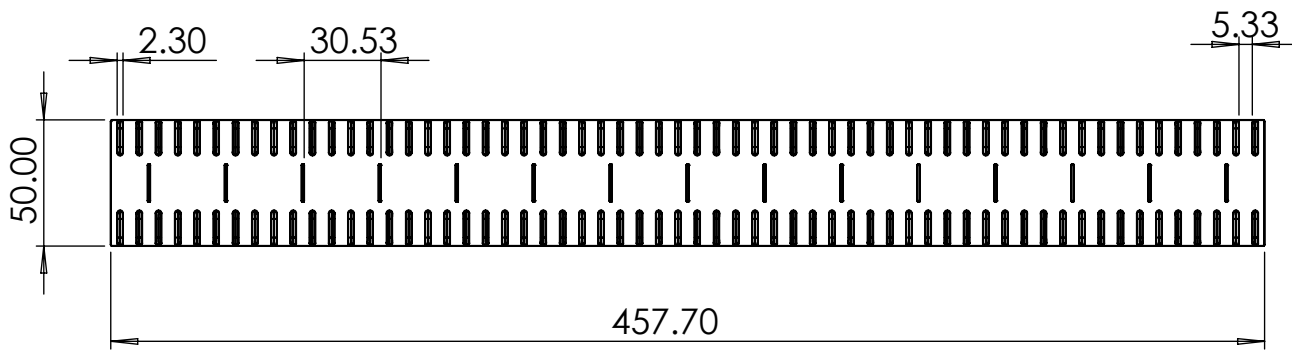
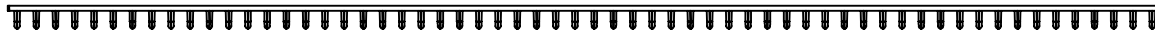


DETAIL A

SCALE 2 : 3



Key	material	XXmm	notes
	CNC cutting		
	laser cutting		
	rebate, countersunk, mitred		
	diamond polishing		
	flame polishing/buffer		
	bending		
	help		
	50.00		info

Client		Project		Drawing Ref		Binning Strip	
Drawn by	NV	Scale	1:3	Thickness	-	Colour	-
Date	06/12/2024	Units	Millimeters	Material	-	Spec	-
Weight	-	Quantity	1	Tolerances	Unless specified - wood +0.50mm / Plastic +0.20mm / Heat Bent Parts +0.50mm / Metal +0.25mm / Foam +1.00mm		
THIRD ANGLE PROJECTION						Drawing No.	1
						REV	1
COPYRIGHT © SOLSTAR ENTERPRISES LTD. REPRODUCTION OF THIS DRAWING OR ANY PART THEREOF, OR CONVEYING TO THIRD PARTY, IS EXPRESSLY FORBIDDEN WITHOUT THE WRITTEN PERMISSION.							IF IN DOUBT ASK!

solstar
 creative retail manufacturing
 Units 20-27 Lane de
 Kuylenburgstraat 10
 Dordrecht, The Netherlands
 +44 01630 280 643